

# APPENDIX A – CONCEPT FIGURES

NYS Route 33, Kensington Expressway Project

PIN 5512.52

December 2022

## **List of Concept figures**

Figure 5-1: Project Concept 1 Plan – No-Build

Figure 5-2A: Project Concept 2 and Project Concept 3 Plan

Figure 5-2B: Project Concepts 2 and 3 Section B-B

Figure 5-2C: Project Concepts 2 and 3 Section C-C

Figure 5-3A: Project Concept 4 Plan

Figure 5-3B: Project Concept 4 Section D-D

Figure 5-3C: Project Concept 4 Section E-E

Figure 5-3D: Project Concept 4 Section F-F

Figure 5-4: Best Street Reconstruction Section A-A (Concepts 2, 3, 4, 5 and 6)

Figure 5-5A: Project Concept 5 Plan

Figure 5-5B: Project Concept 5 Section F-F

Figure 5-6A: Concept 6 Plan Project

Figure 5-6B: Project Concept 6 Section G-G

Figure 5-6C: Project Concept 6 Section H-H

Figure 5-7: Project Concept 7 Section

Figure 5-8A: Tunnel Ventilation Option 1 (Concepts 5, 6 and 7)

Figure 5-8B: Tunnel Ventilation Option 2A (Concepts 5, 6 and 7)

Figure 5-8C: Tunnel Ventilation Option 2B (Concepts 5, 6 and 7)

Figure 5-9A: Project Concept 8 Plan

Figure 5-9B: Project Concept 8 Sections A-A and B-B

Figure 5-10A: Project Concept 9 Plan

Figure 5-10B: Project Concept 9 Sections A-A and B-B





# NYS Route 33, Kensington Expressway Project Project Concept 1 - No Build







LEGEND:

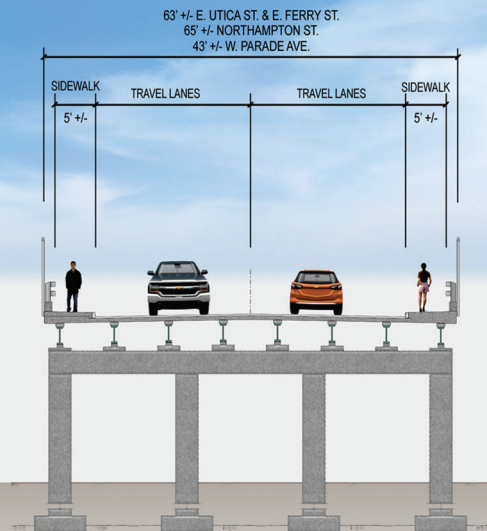
- REHABILITATION BRIDGES (CONCEPT 2)/  
REPLACEMENT BRIDGES (CONCEPT 3)
- SEE RELATED SECTION RENDERING

## NYS Route 33, Kensington Expressway Project

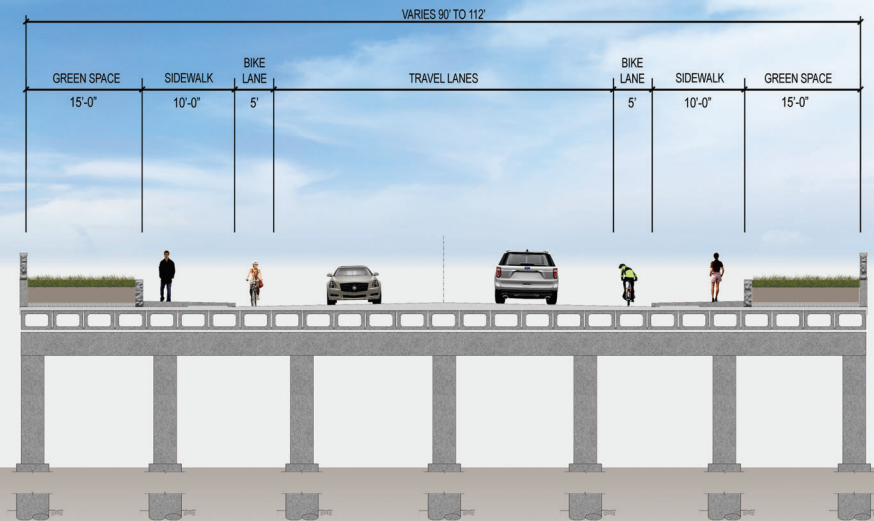
Project Concept 2 – Bridge Rehabilitation with Humboldt Enhancements  
Project Concept 3 – Bridge Replacement with Humboldt Enhancements

0 25 50 100 200 300 400 500 FT.





**SECTION B-B**  
**EXISTING CORRIDOR**  
W. PARADE AVE., NORTHAMPTON ST., EAST UTICA ST., EAST FERRY ST.



**SECTION B-B**  
**PROPOSED BRIDGE SECTION**  
**UNDER CONCEPTS 2 AND 3**  
W. PARADE AVE., NORTHAMPTON ST., EAST UTICA ST., EAST FERRY ST.



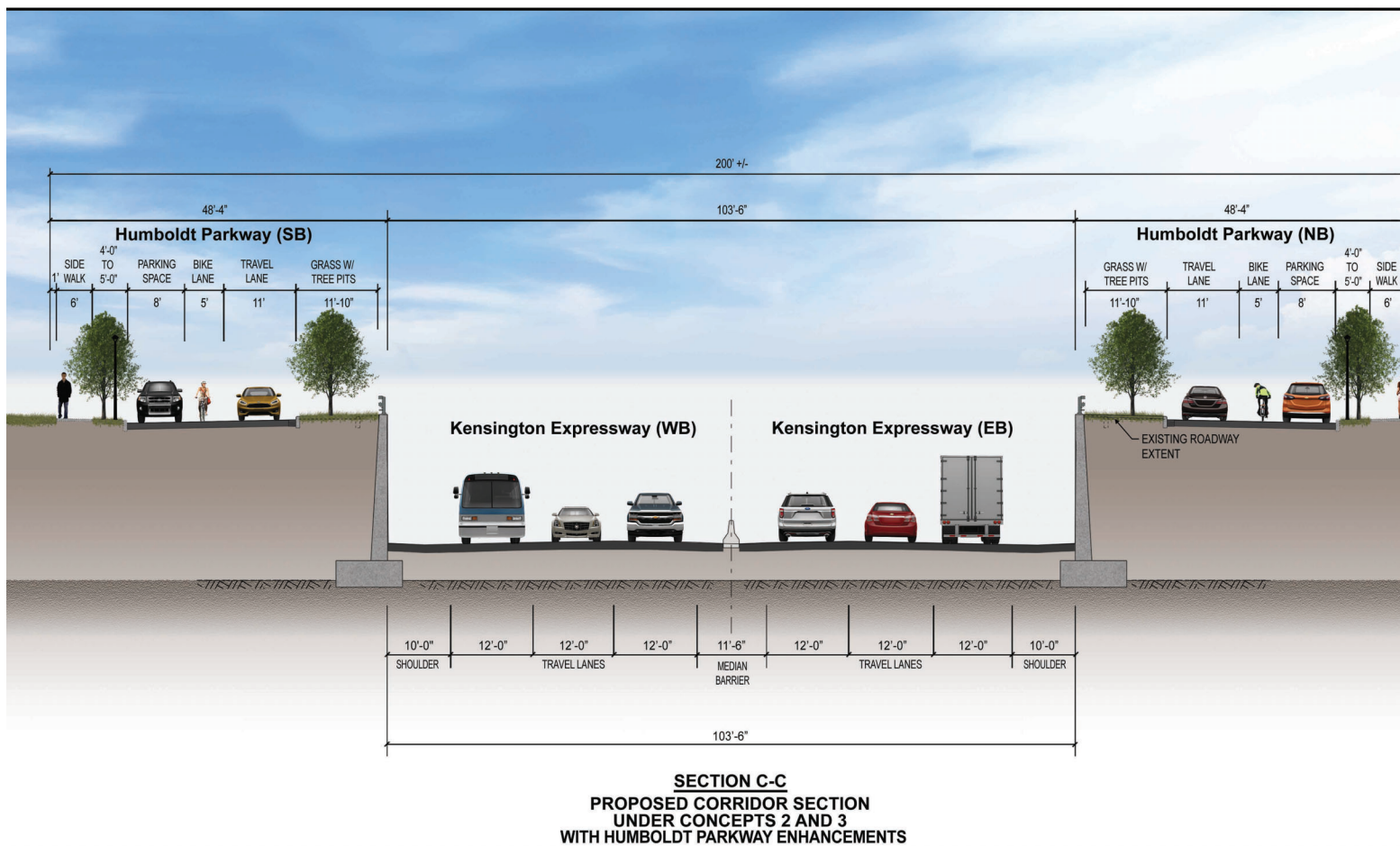
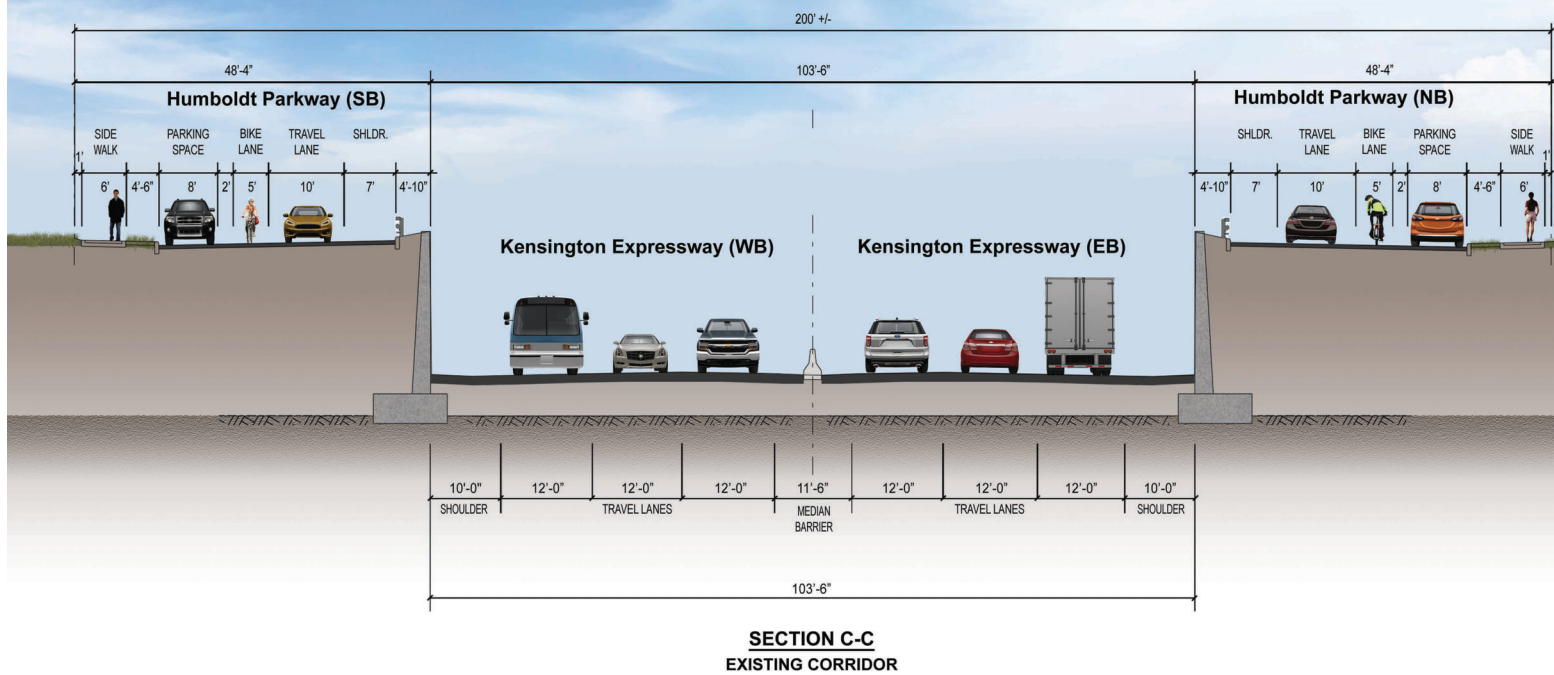
Department of  
Transportation

**NYS Route 33, Kensington Expressway Project**  
Project Concept 2 – Bridge Rehabilitation with Humboldt Enhancements  
Project Concept 3 – Bridge Replacement with Humboldt Enhancements



Figure 5-2B  
Project Concepts 2 and 3 Section B-B





**Department of  
Transportation**

**NYS Route 33, Kensington Expressway Project**  
Project Concept 2 – Bridge Rehabilitation with Humboldt Enhancements  
Project Concept 3 – Bridge Replacement with Humboldt Enhancements

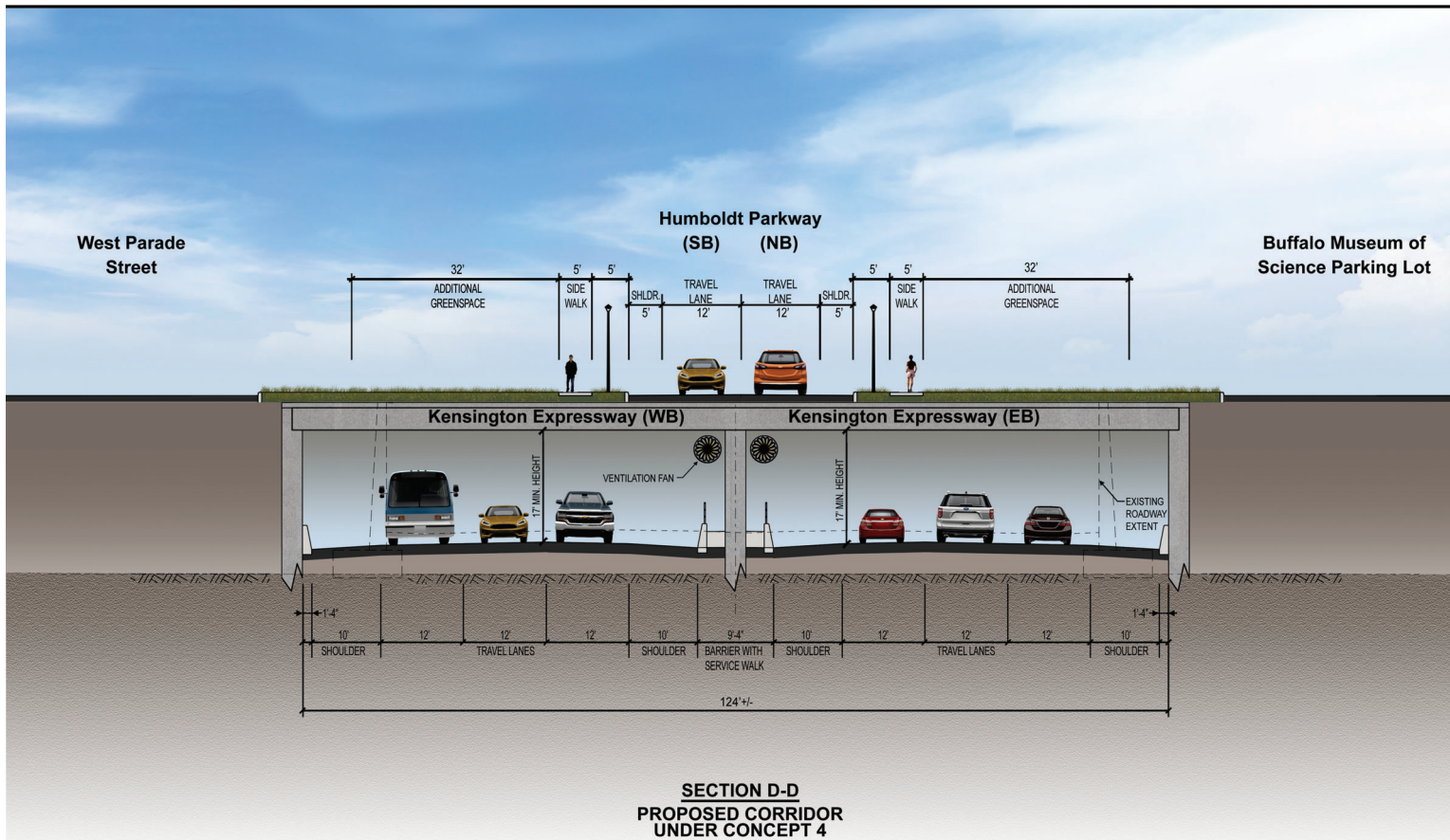
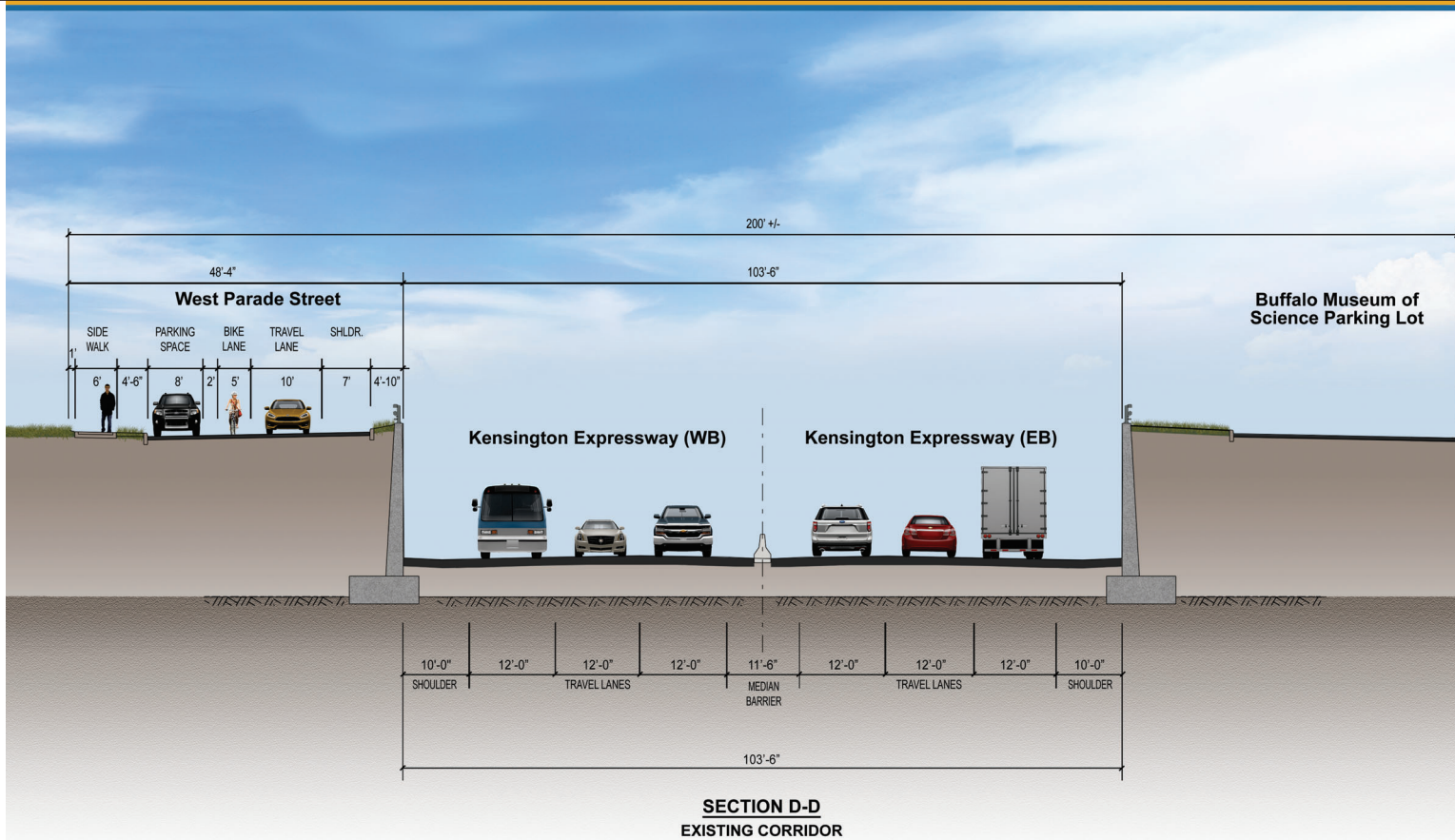


Figure 5-2C  
Project Concepts 2 and 3 Section C-C









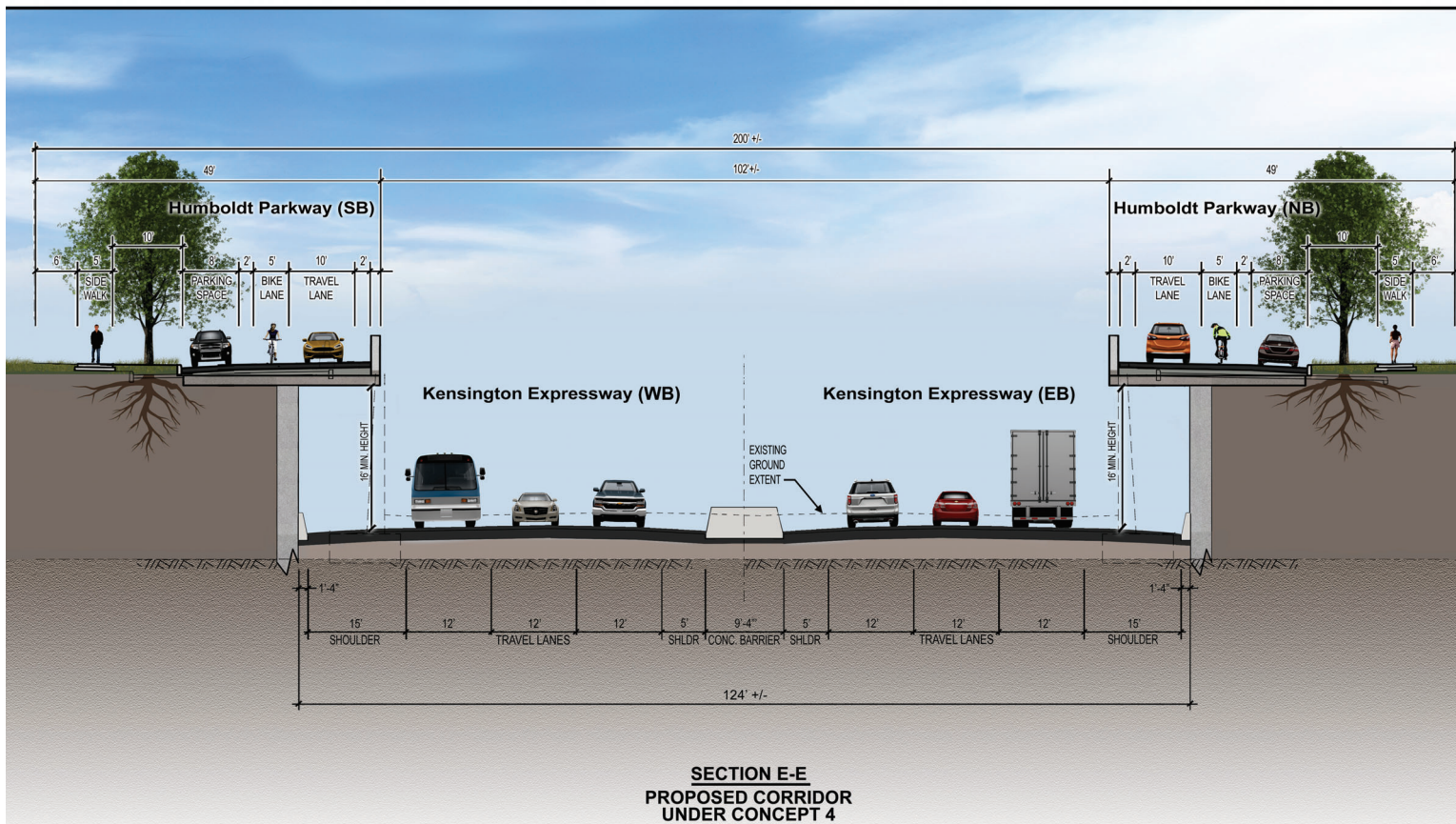
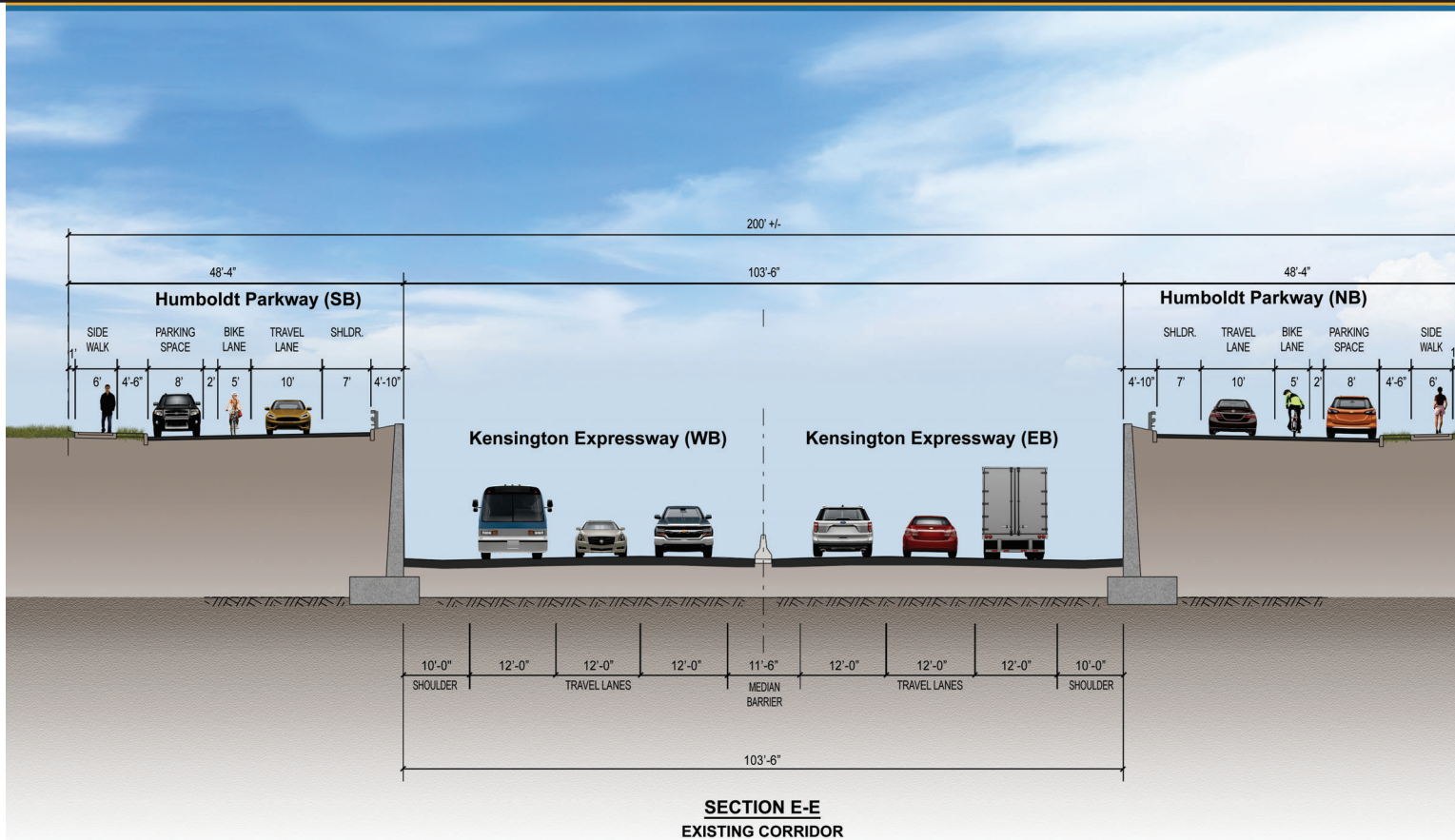
Department of  
Transportation

**NYS Route 33, Kensington Expressway Project**  
Project Concept 4 - Kensington Reconstruction with Improved  
Community Connections through Partial Decking



Figure 5-3B  
Project Concept 4 Section D-D





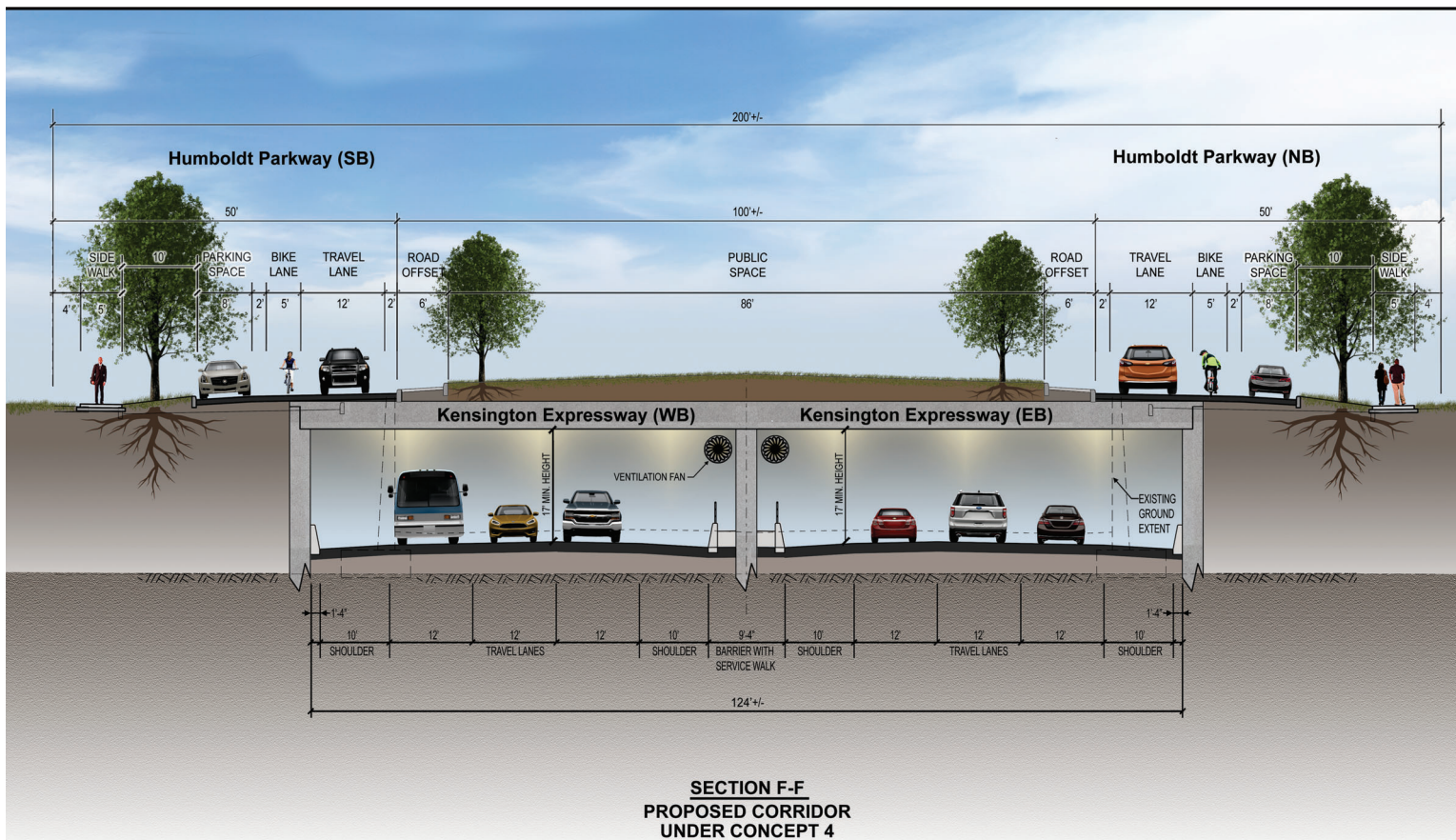
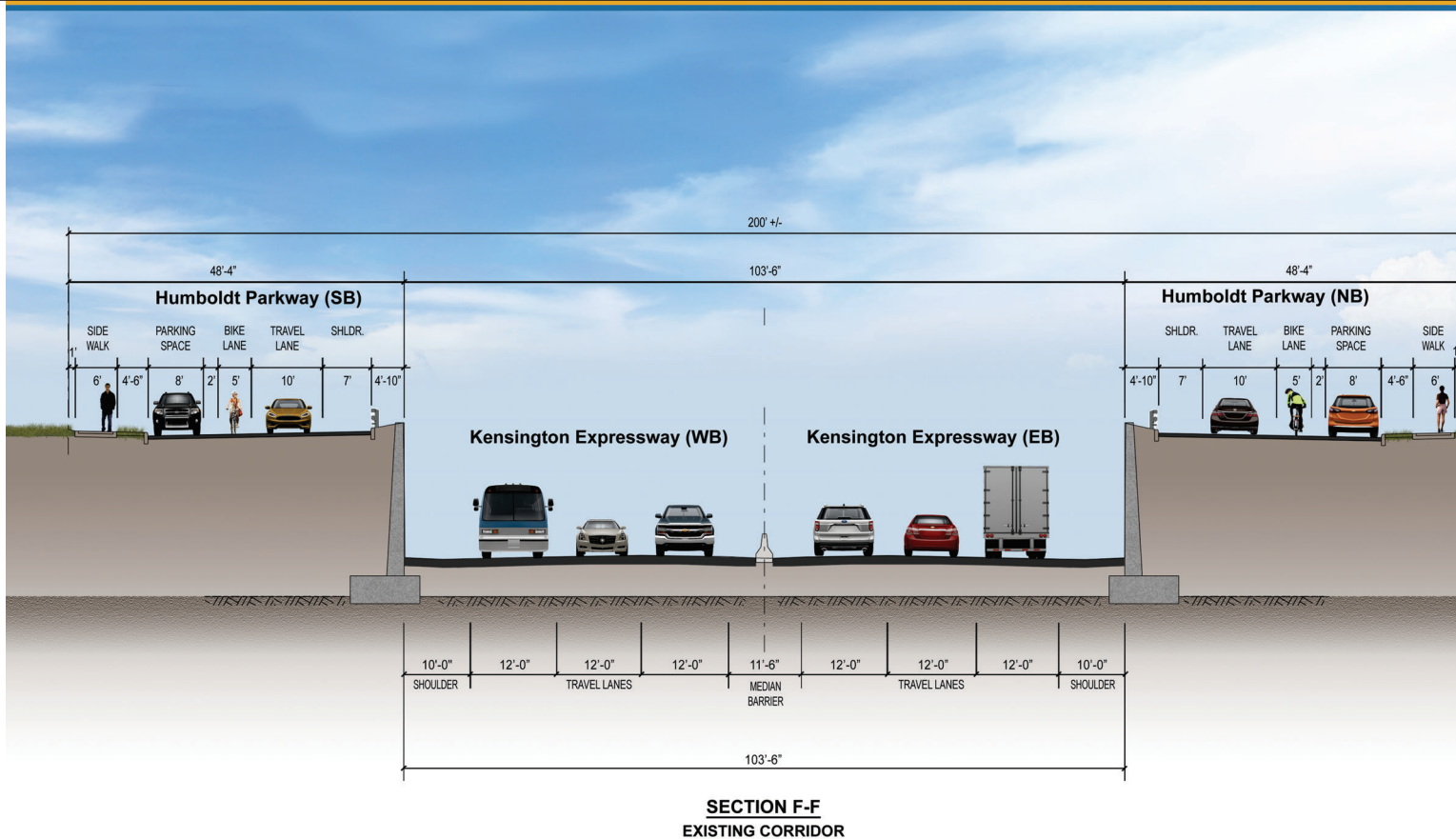
Department of  
Transportation

**NYS Route 33, Kensington Expressway Project**  
Project Concept 4 - Kensington Reconstruction with Improved  
Community Connections through Partial Decking



Figure 5-3C  
Project Concept 4 Section E-E





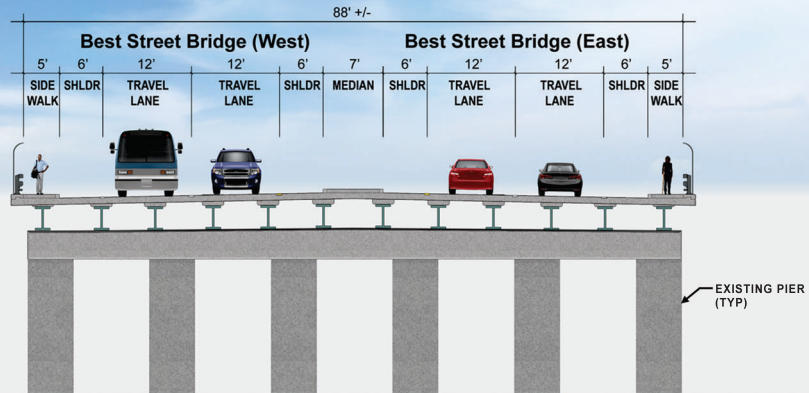
Department of  
Transportation

**NYS Route 33, Kensington Expressway Project**  
Project Concept 4 - Kensington Reconstruction with Improved  
Community Connections through Partial Decking

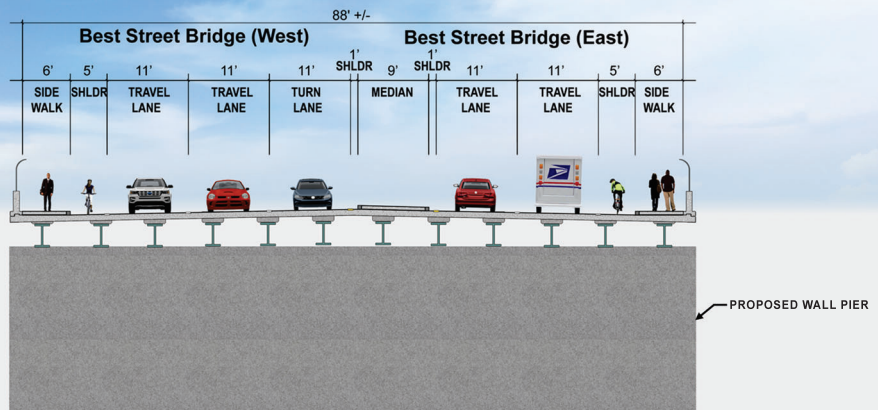


Figure 5-3D  
Project Concept 4 Section F-F





**SECTION A-A**  
EXISTING BEST STREET BRIDGE



**SECTION A-A**  
PROPOSED BEST STREET BRIDGE UNDER  
CONCEPTS 2, 3, 4, 5 & 6



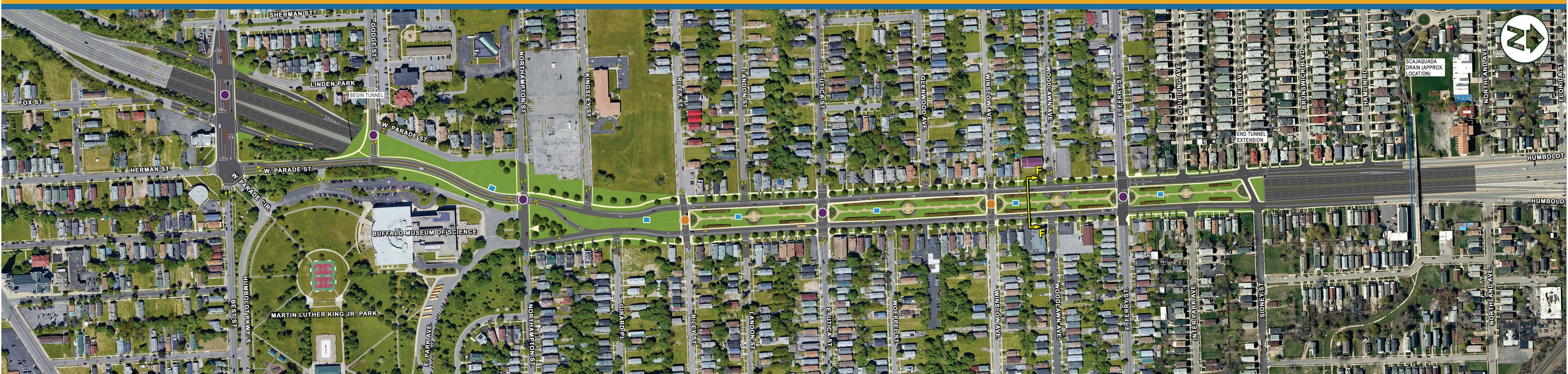
Department of  
Transportation

**NYS Route 33, Kensington Expressway Project**  
Project Concepts 2, 3, 4, 5 & 6 - Best Street Reconstruction



Figure 5-4  
Best Street Reconstruction Section A-A  
(Concepts 2, 3, 4, 5 and 6)





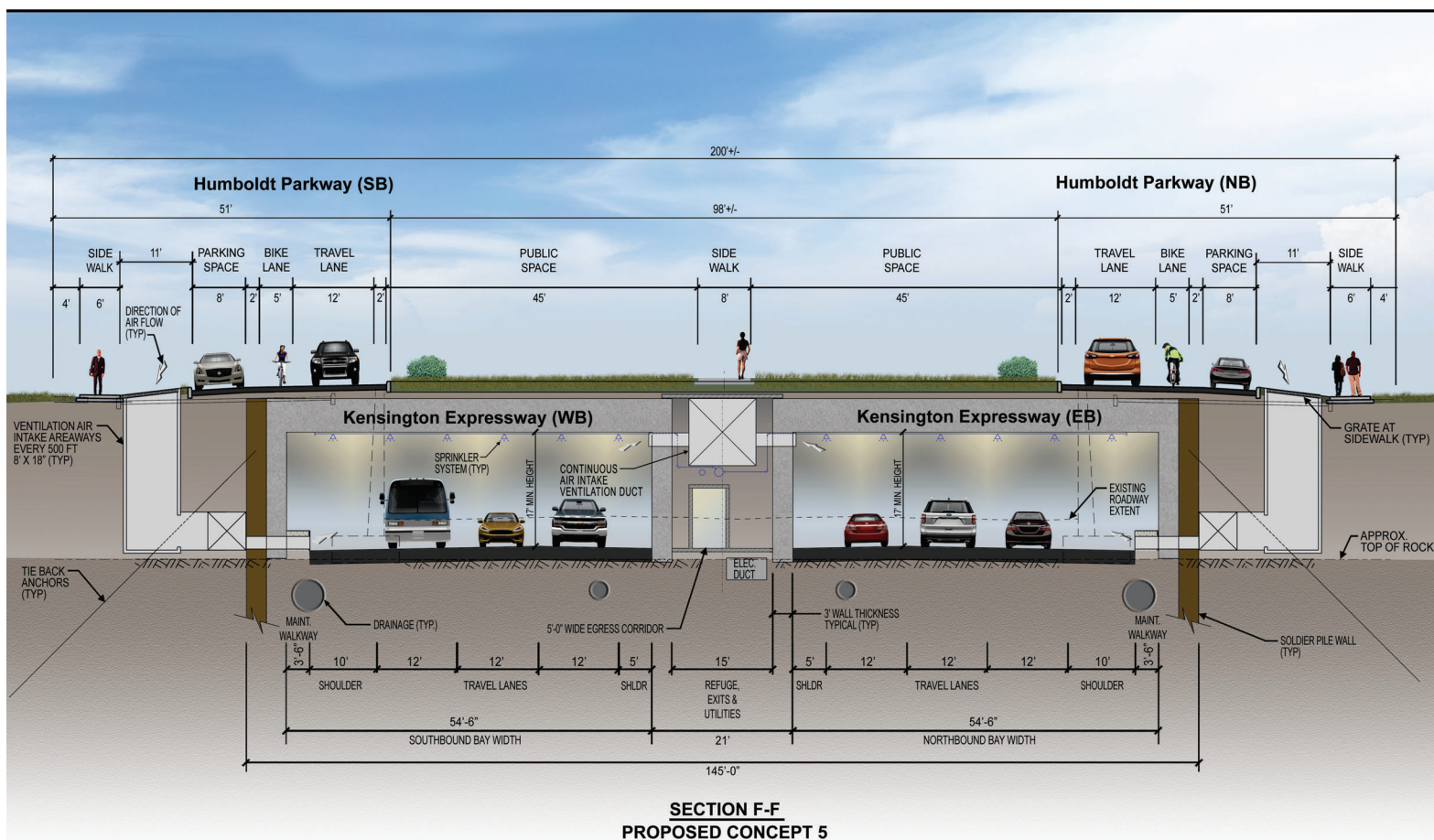
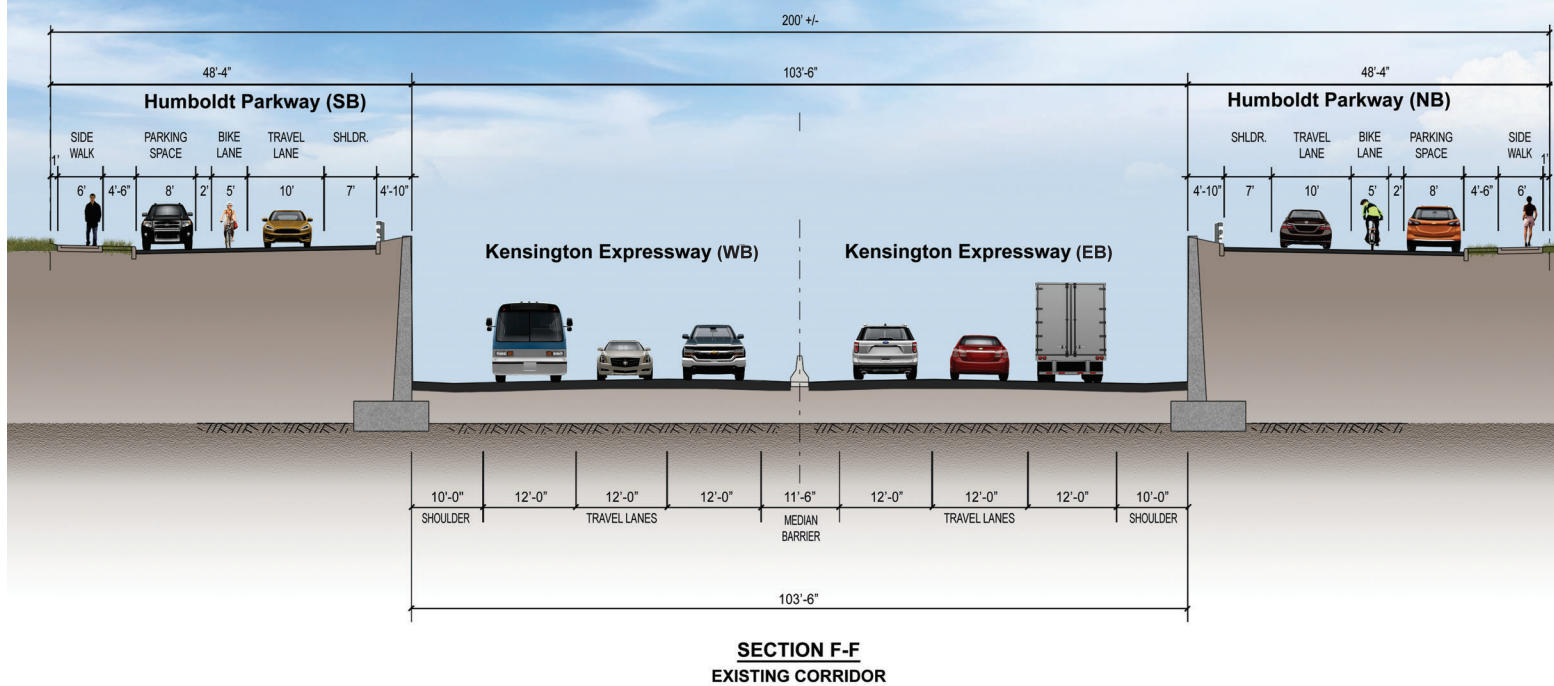
- LEGEND:**
- REPLACEMENT BRIDGES
  - NEW BRIDGE CONNECTIONS
  - VENTILATION STRUCTURE
  - SEE RELATED SECTION RENDERING

**NYS Route 33, Kensington Expressway Project**  
**Project Concept 5 - Kensington Reconstruction with a 6-Lane Tunnel for Improved Community Connections and establishing Victorian Gardens**

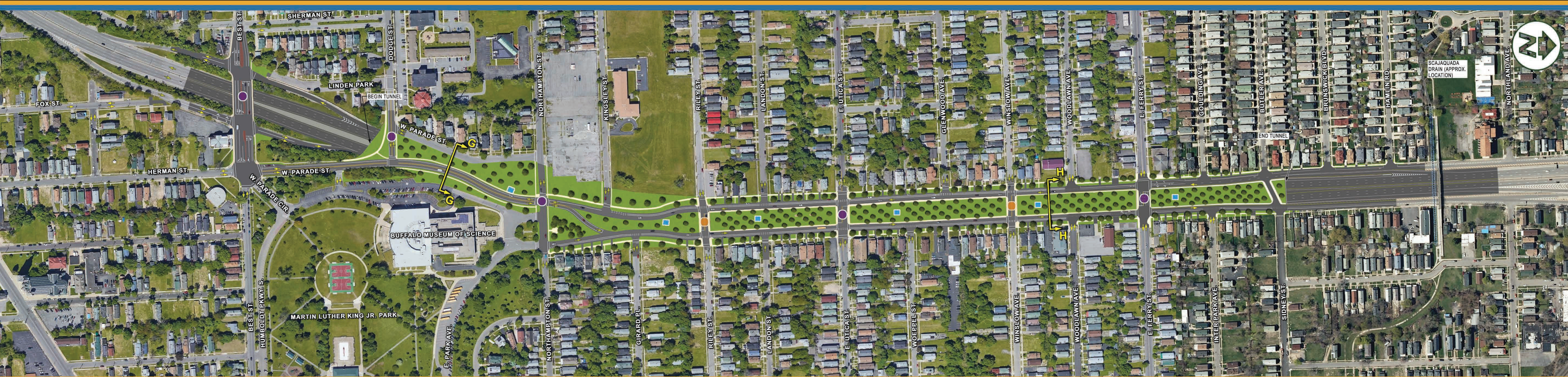


Figure 5-5A  
Project Concept 5 Plan









- LEGEND:
- REPLACEMENT BRIDGES
  - NEW BRIDGE CONNECTIONS
  - VENTILATION STRUCTURE
  - SEE RELATED SECTION RENDERING

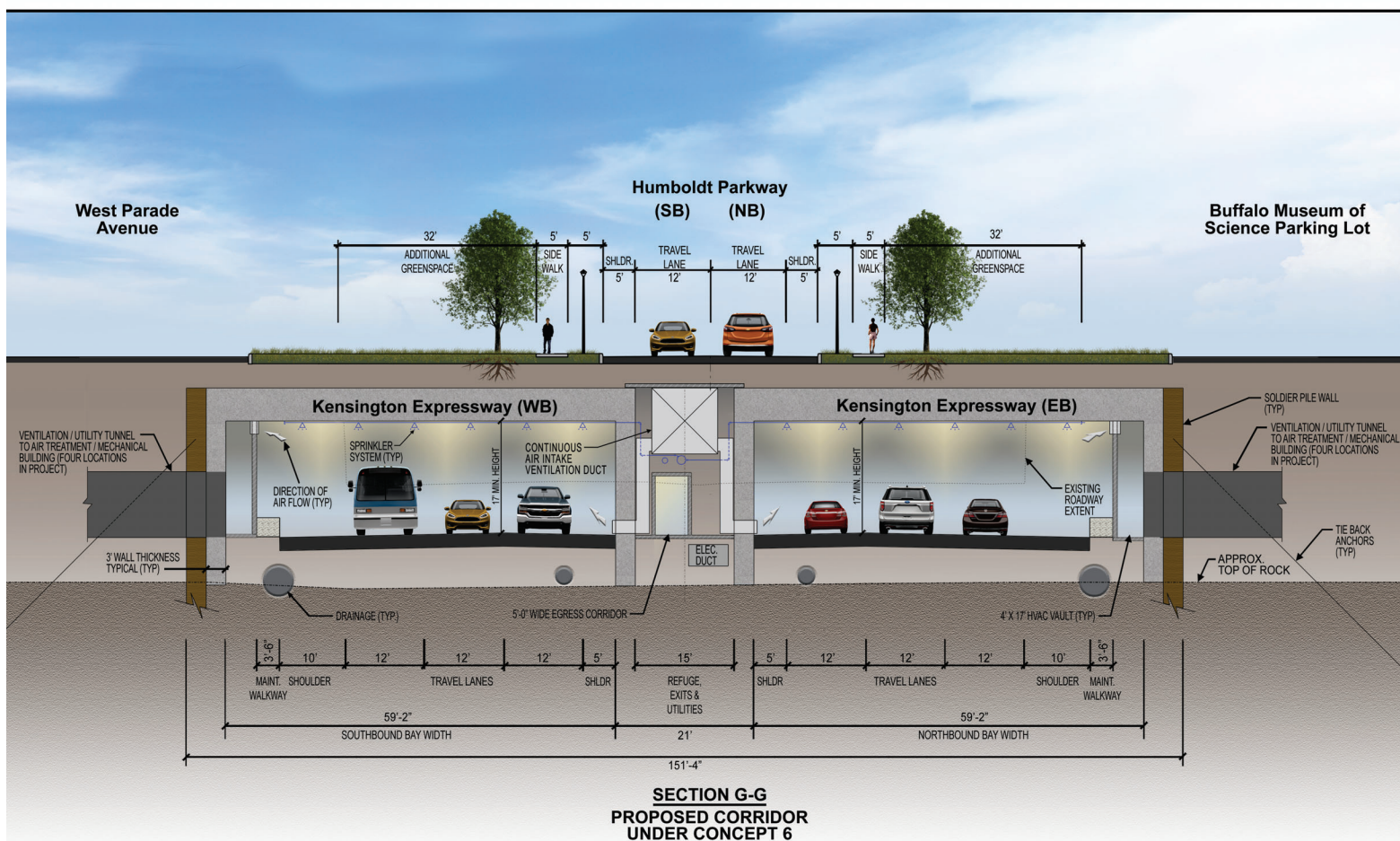
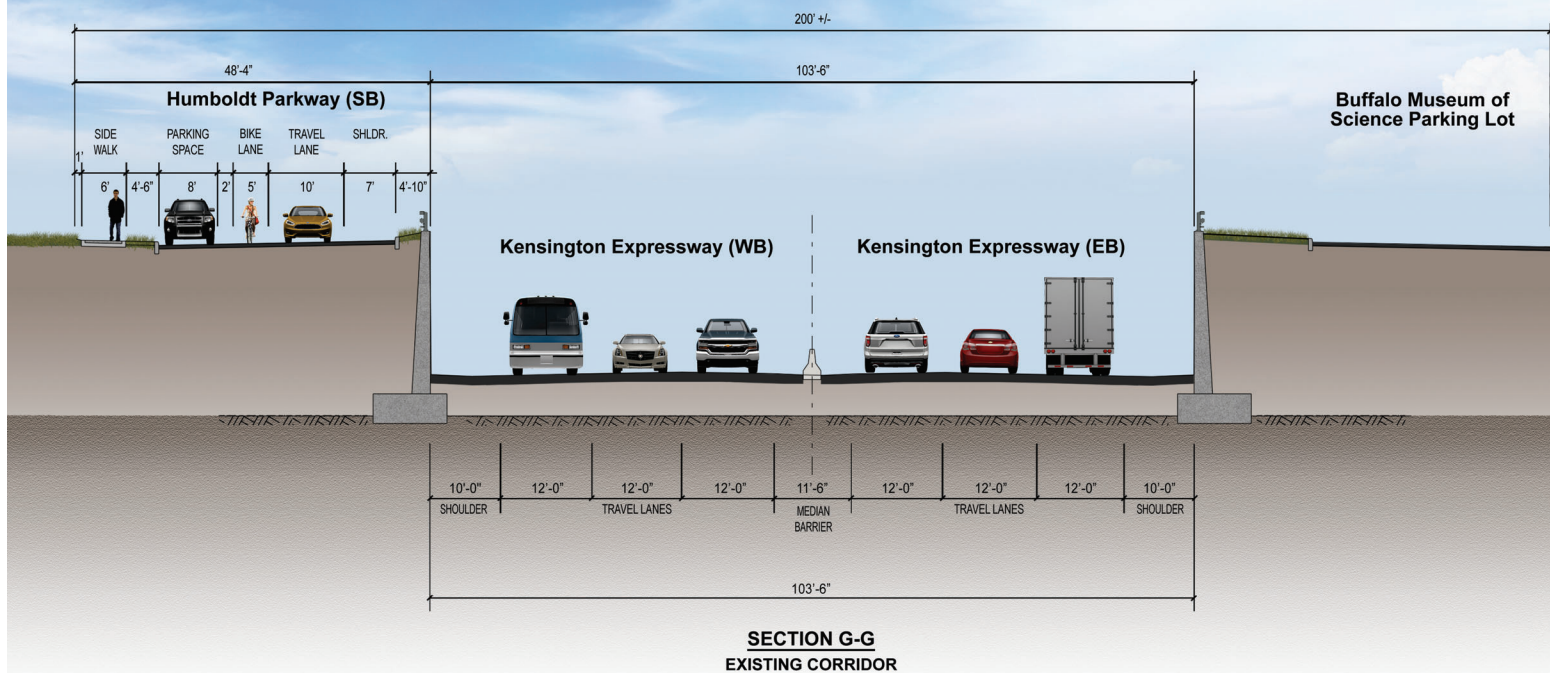
NYS Route 33, Kensington Expressway Project

Project Concept 6 - Kensington Reconstruction with a 6-Lane Tunnel for Improved Community Connections, including a Tree-Lined Parkway Setting



Figure 5-6A  
Concept 6 Plan Project





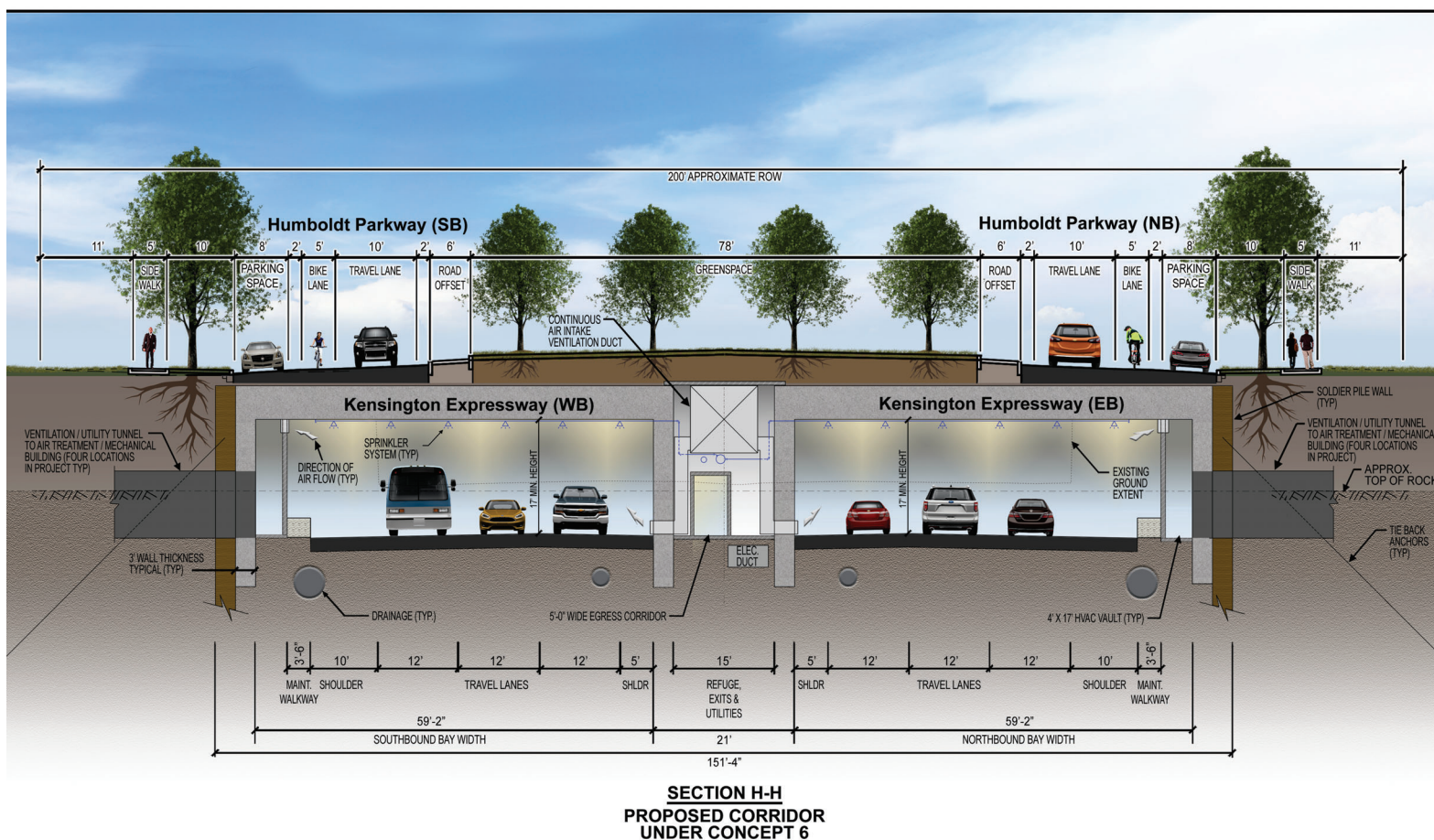
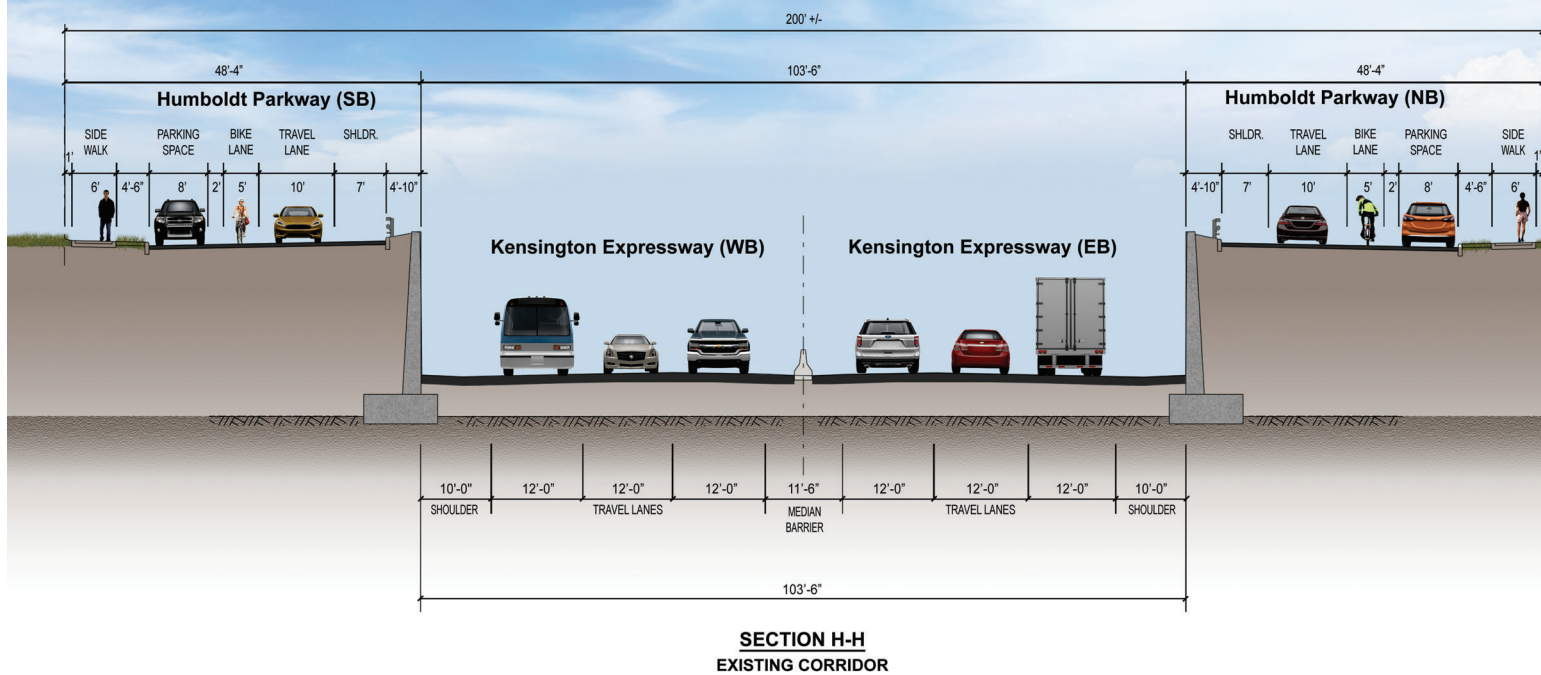
**Department of  
Transportation**

**NYS Route 33, Kensington Expressway Project**  
Project Concept 6 - Kensington Reconstruction with a 6-Lane Tunnel for  
Improved Community Connections, including a Tree-Lined Parkway Setting



Figure 5-6B  
Project Concept 6 Section G-G





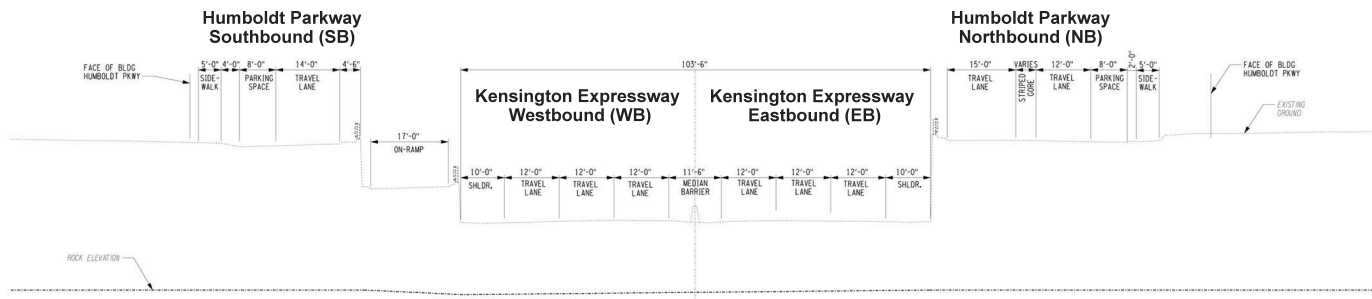
**Department of  
Transportation**

**NYS Route 33, Kensington Expressway Project**  
Project Concept 6 - Kensington Reconstruction with a 6-Lane Tunnel for  
Improved Community Connections, including a Tree-Lined Parkway Setting

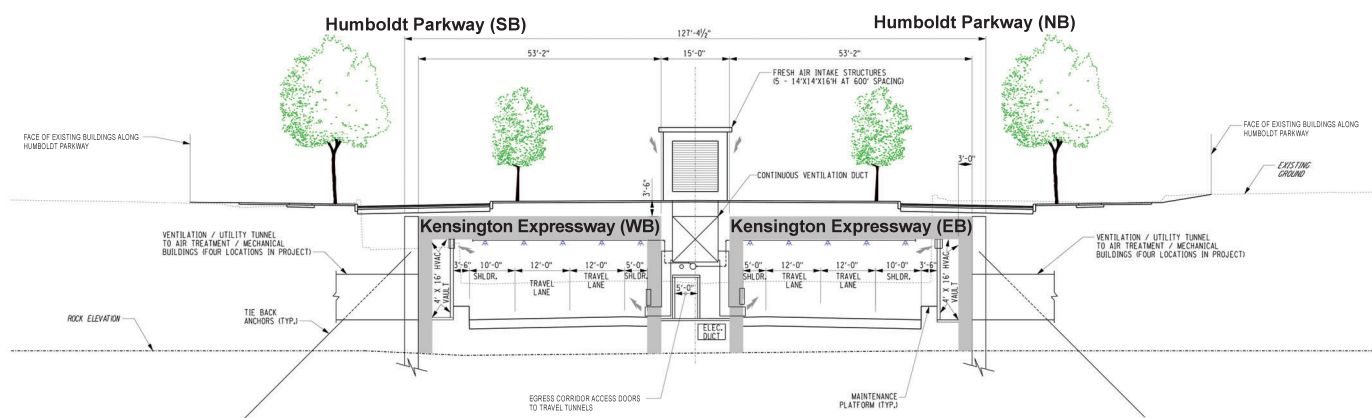


Figure 5-6C  
Project Concept 6 Section H-H





**TYPICAL SECTION  
EXISTING CORRIDOR**



**TYPICAL SECTION  
PROPOSED CORRIDOR  
UNDER CONCEPT 7**



**Department of  
Transportation**

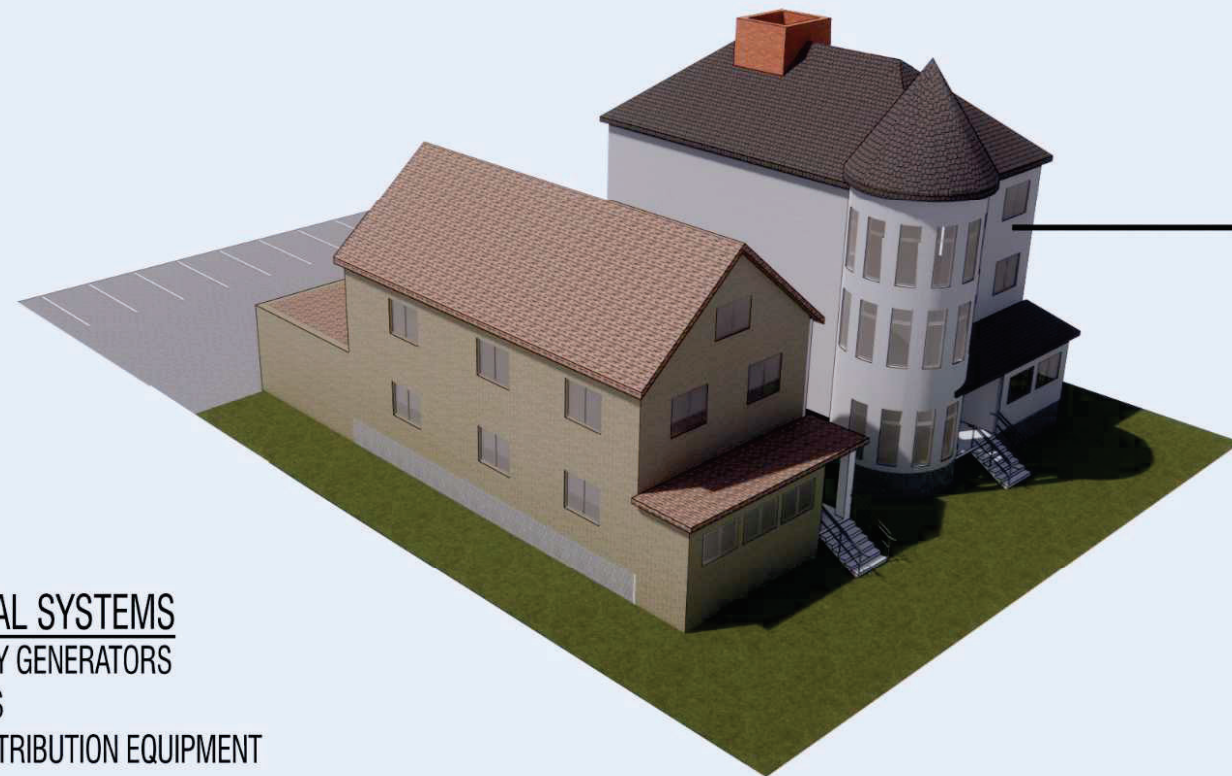
**NYS Route 33, Kensington Expressway Project**  
Project Concept 7 - Kensington Reconstruction with a 4-Lane  
Tunnel for Improved Community Connections





# Project Concepts

## Ventilation Option 1

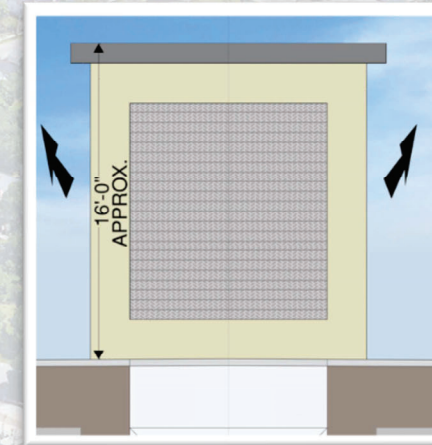


MECHANICAL SYSTEMS WITHIN  
"HOUSE-LIKE" BUILDINGS

### MECHANICAL SYSTEMS

- EMERGENCY GENERATORS
- FIRE PUMPS
- POWER DISTRIBUTION EQUIPMENT
- CONTROLS

Single (60' by 60') Utility Building Complex



### Air Ventilation Structures

5 locations  
located between  
Eastbound and  
Westbound tunnels  
spaced at approx. 600'



Air Intake Grating  
14 locations (20' by 5')  
spaced @ 500',  
both sides of  
Humboldt Pkwy

- ❖ Renderings are conceptual only; building types, architecture and site elements would be further refined as the design progresses.



Department of  
Transportation

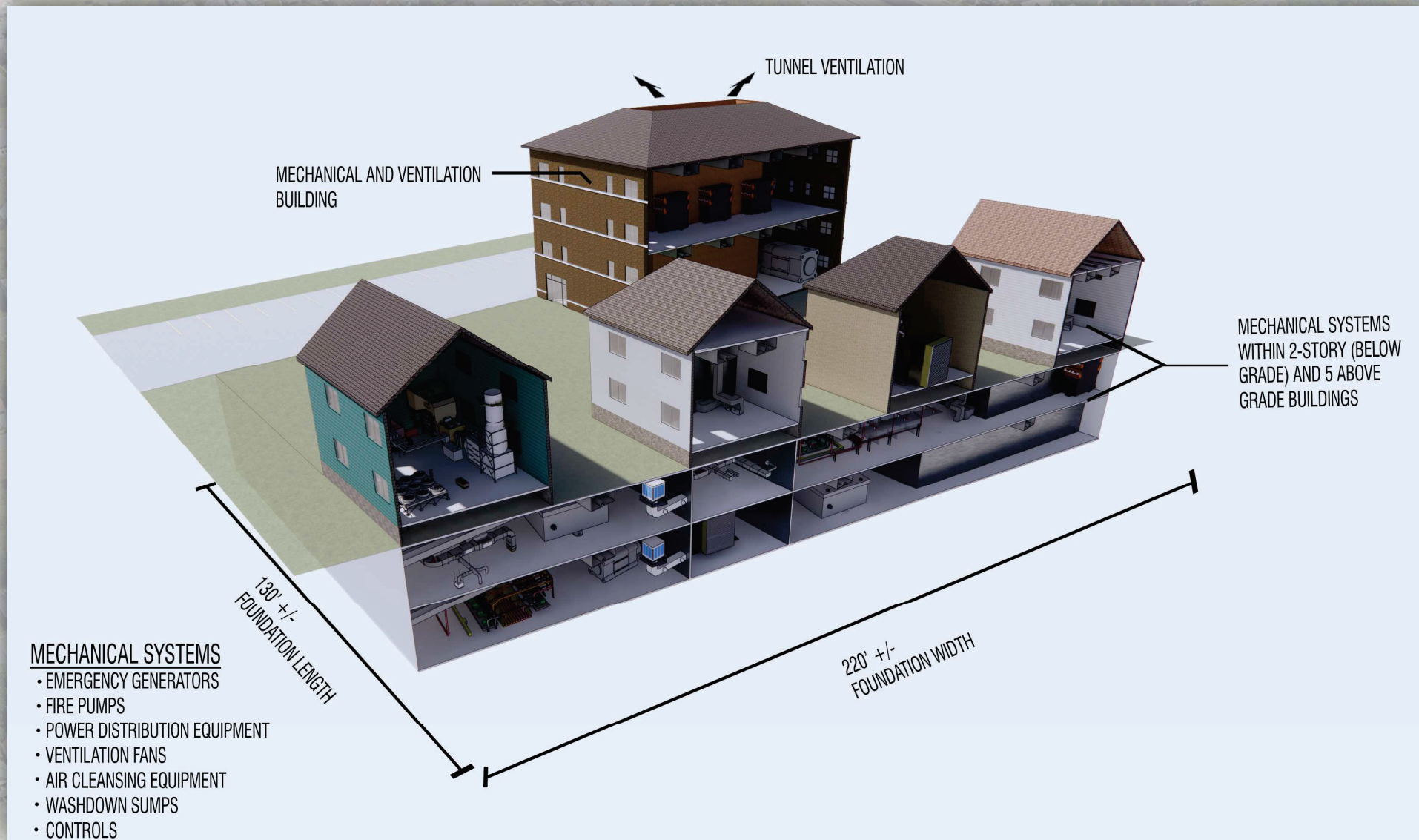


Figure 5-8A  
Tunnel Ventilation Option 1  
(Concepts 5, 6 and 7)

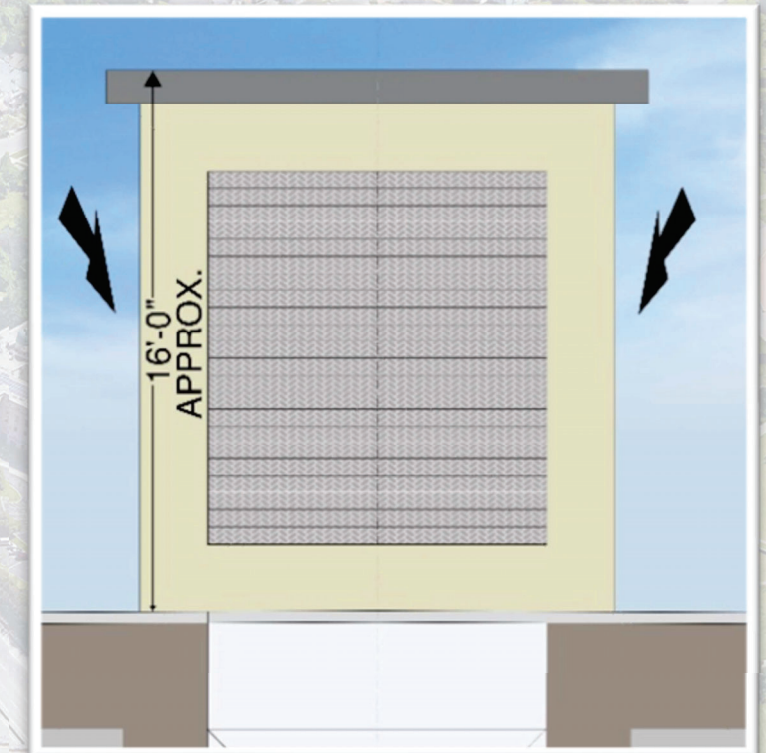


# Project Concepts

## Ventilation Option 2A



**Single (130' by 220') Utility Building Complex**



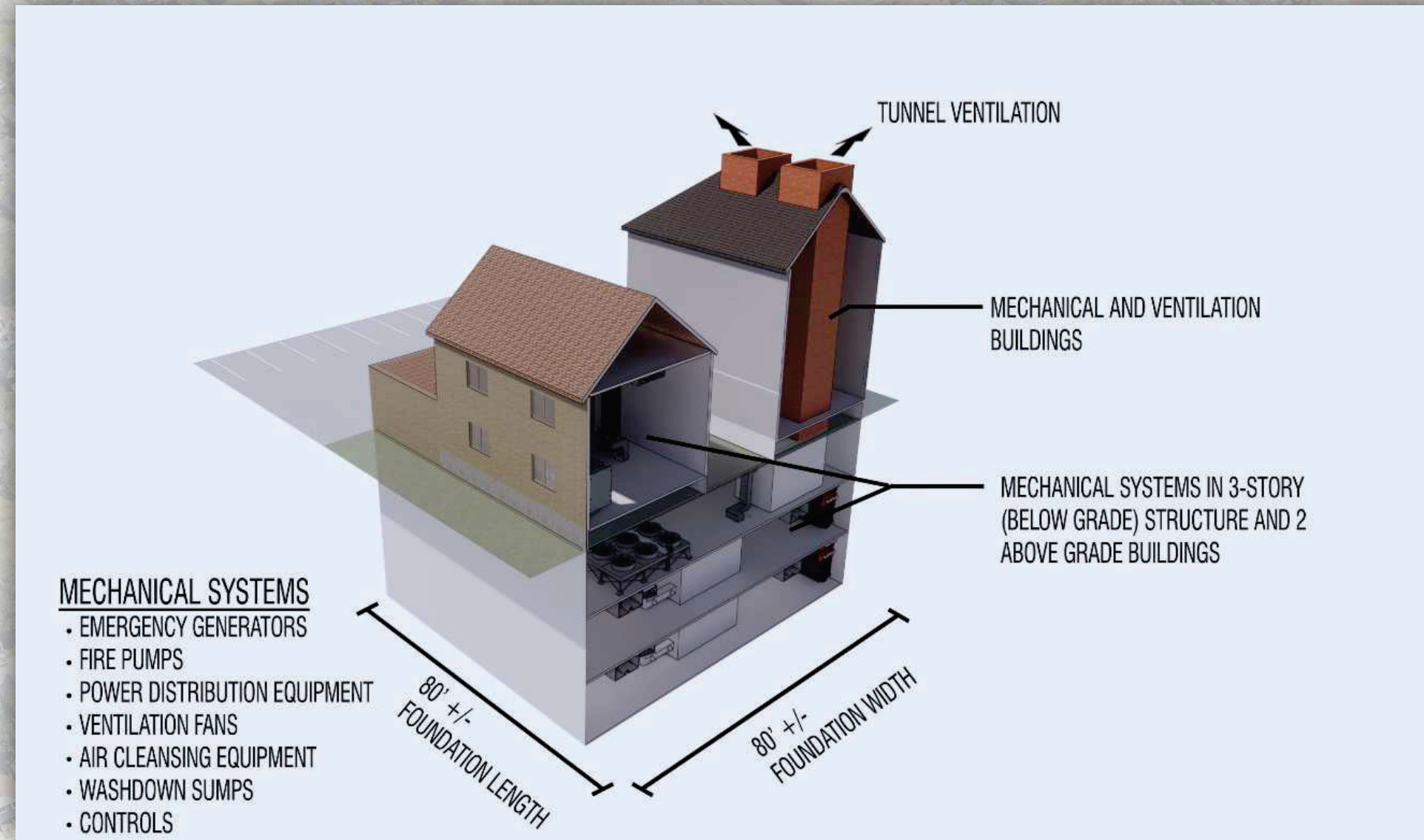
**Air Ventilation Structures**  
5 locations located between  
Eastbound and Westbound tunnels  
Spaced at approx. 600'

❖ Renderings are conceptual only; building types, architecture and site elements would be further refined as the design progresses.

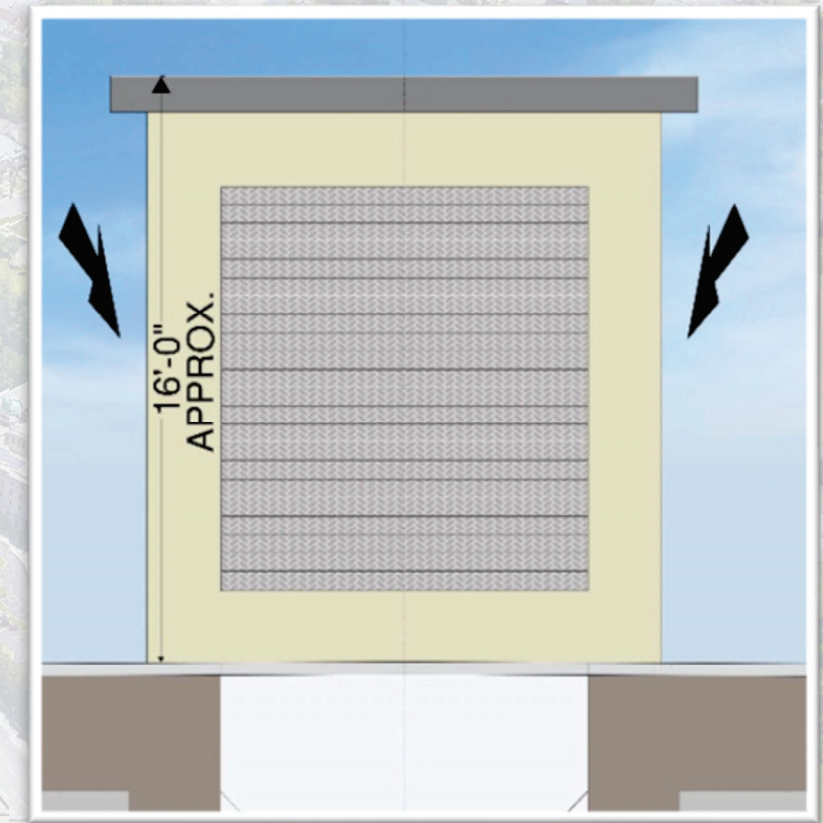


# Project Concepts

## Ventilation Option 2B



**Four (80' by 80') Utility Building Complexes**  
(one complex shown above)



**Air Ventilation Structures**  
5 locations located between  
Eastbound and Westbound tunnels  
Spaced at approx. 600'

❖ Renderings are conceptual only; building types, architecture and site elements would be further refined as the design progresses.

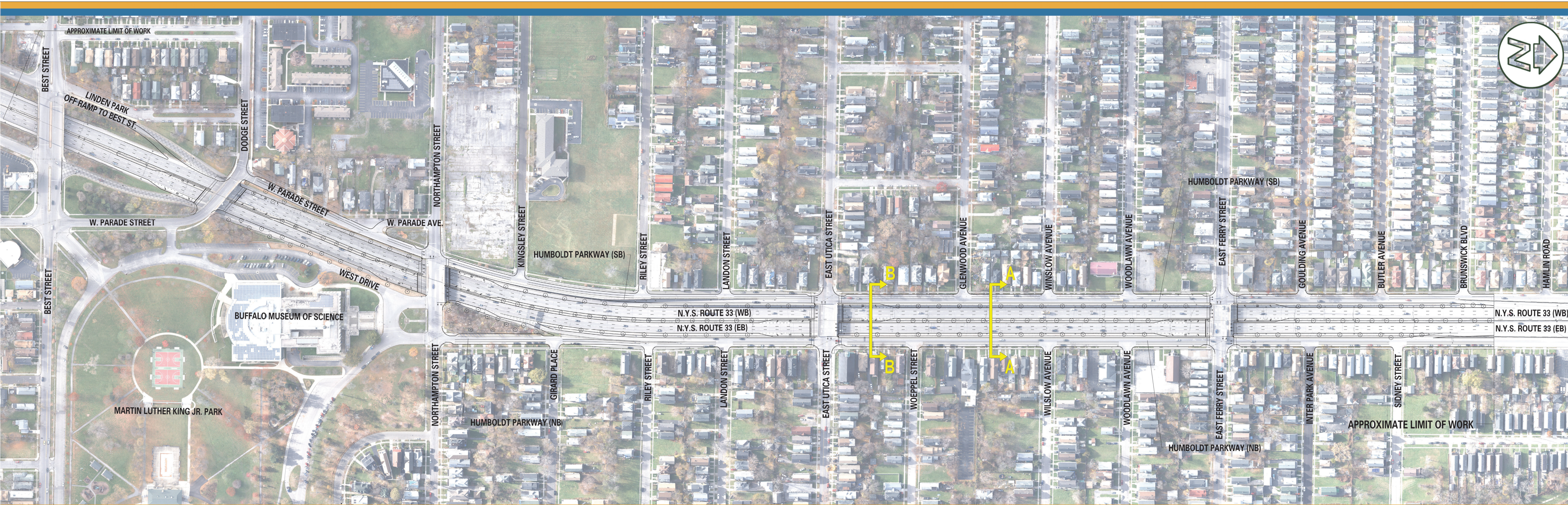


Department of  
Transportation



Figure 5-8C  
Tunnel Ventilation Option 2B  
(Concepts 5, 6 and 7)



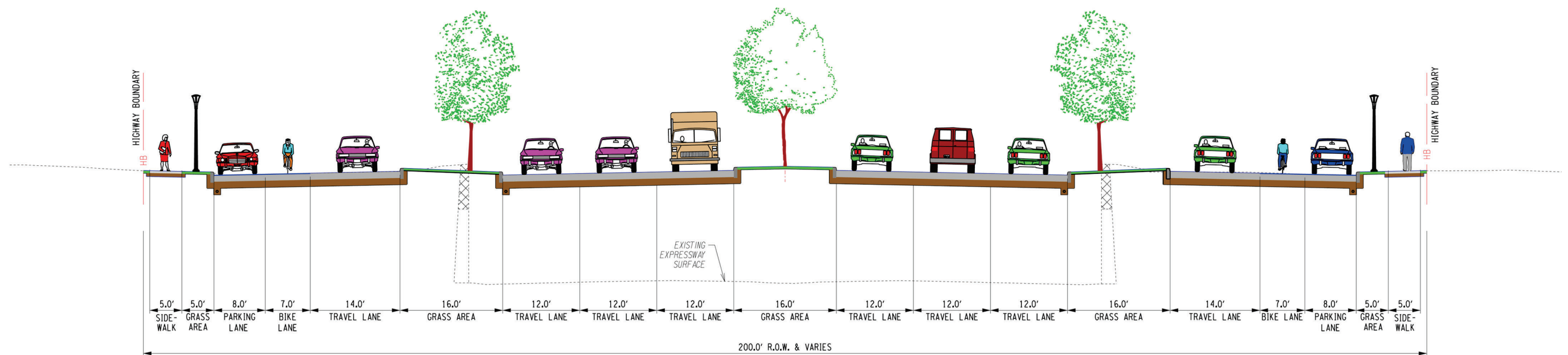


## NYS Route 33, Kensington Expressway Project

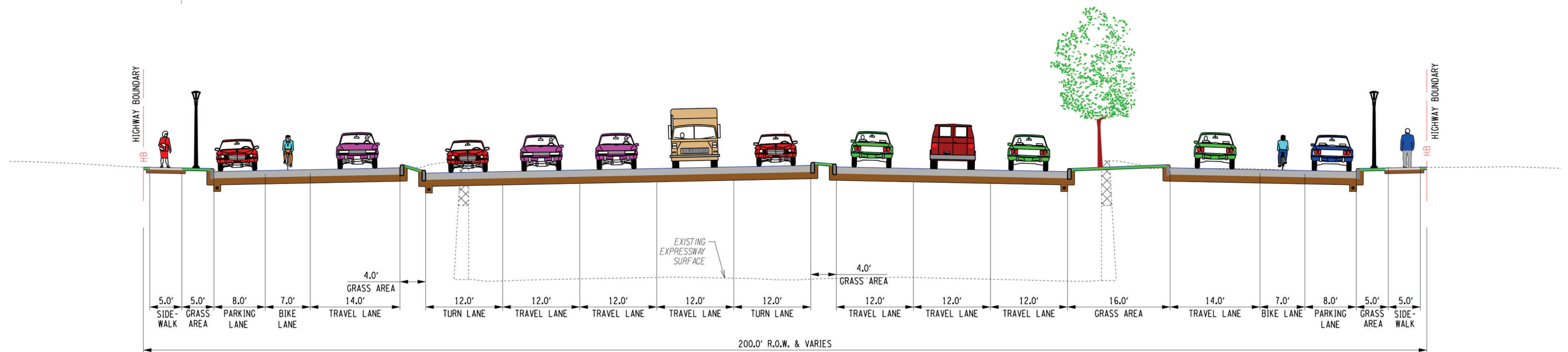
### Project Concept 8 - Kensington Reconstruction as a 6-Lane Boulevard

0 25 50 100 200 300 400 500 FT.





CONCEPTUAL TYPICAL SECTION BOULEVARD  
SECTION A-A



CONCEPTUAL TYPICAL SECTION BOULEVARD  
SECTION B-B  
TYPICAL SECTIONS  
PROPOSED CORRIDOR  
UNDER CONCEPT 8



Department of  
Transportation

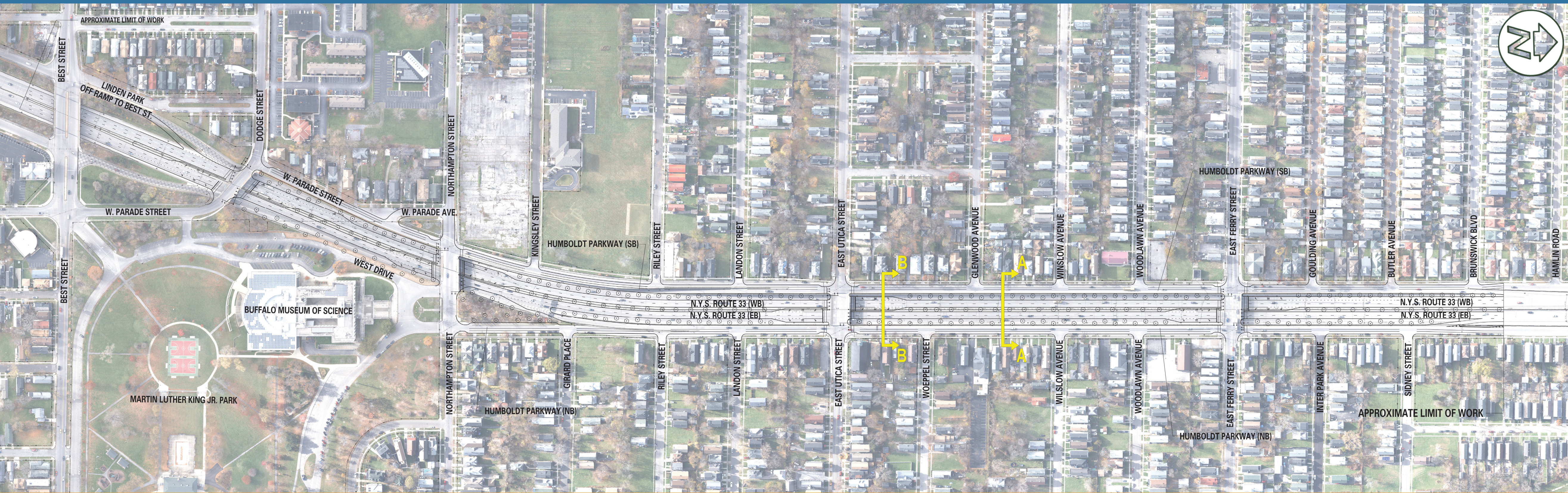
## NYS Route 33, Kensington Expressway Project

### Project Concept 8 - Kensington Reconstruction as a 6-Lane Boulevard



Figure 5-9B  
Project Concept 8 Sections A-A and B-B





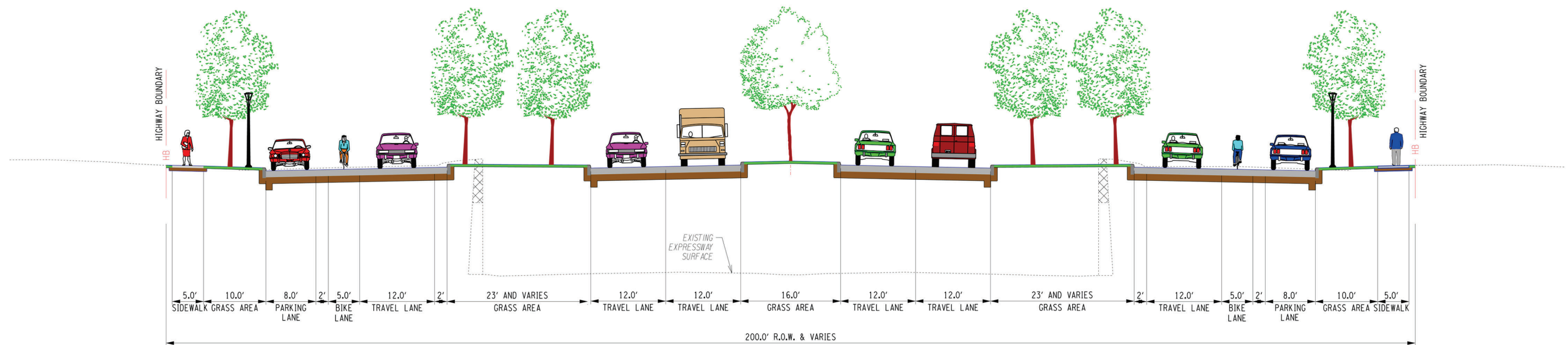
**NYS Route 33, Kensington Expressway Project**  
**Project Concept 9 - Kensington Reconstruction as a 4-Lane Boulevard**  
**with Traffic Diverted to Other Roads**



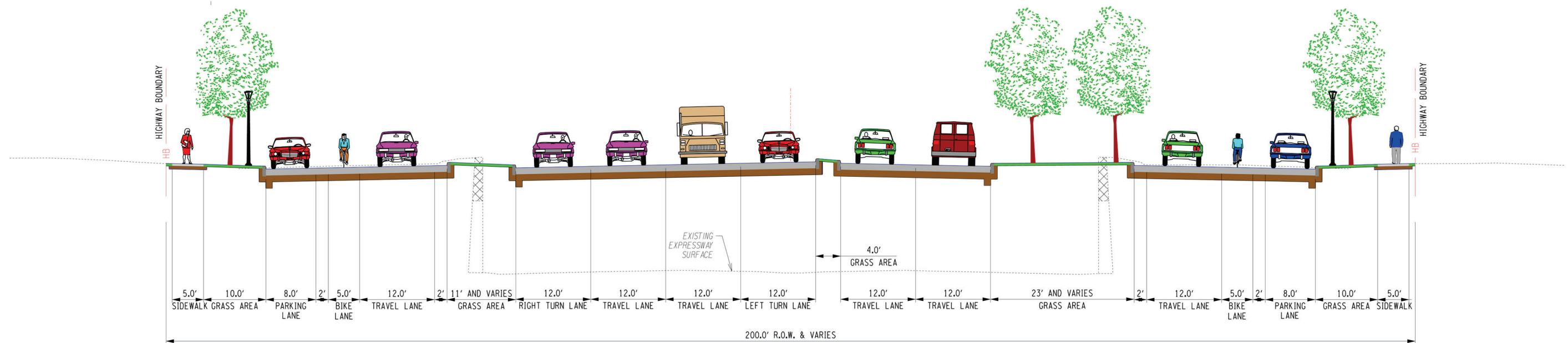
Figure 5-10A  
 Project Concept 9 Plan







CONCEPTUAL TYPICAL SECTION BOULEVARD  
SECTION A-A



CONCEPTUAL TYPICAL SECTION BOULEVARD  
SECTION B-B

**TYPICAL SECTIONS  
PROPOSED CORRIDOR  
UNDER CONCEPT 9**



**Department of  
Transportation**

**NYS Route 33, Kensington Expressway Project**  
**Project Concept 9 - Kensington Reconstruction as a  
4-Lane Boulevard with Traffic Diverted to Other Roads**



Figure 5-10B  
Project Concept 9 Sections A-A and B-B